



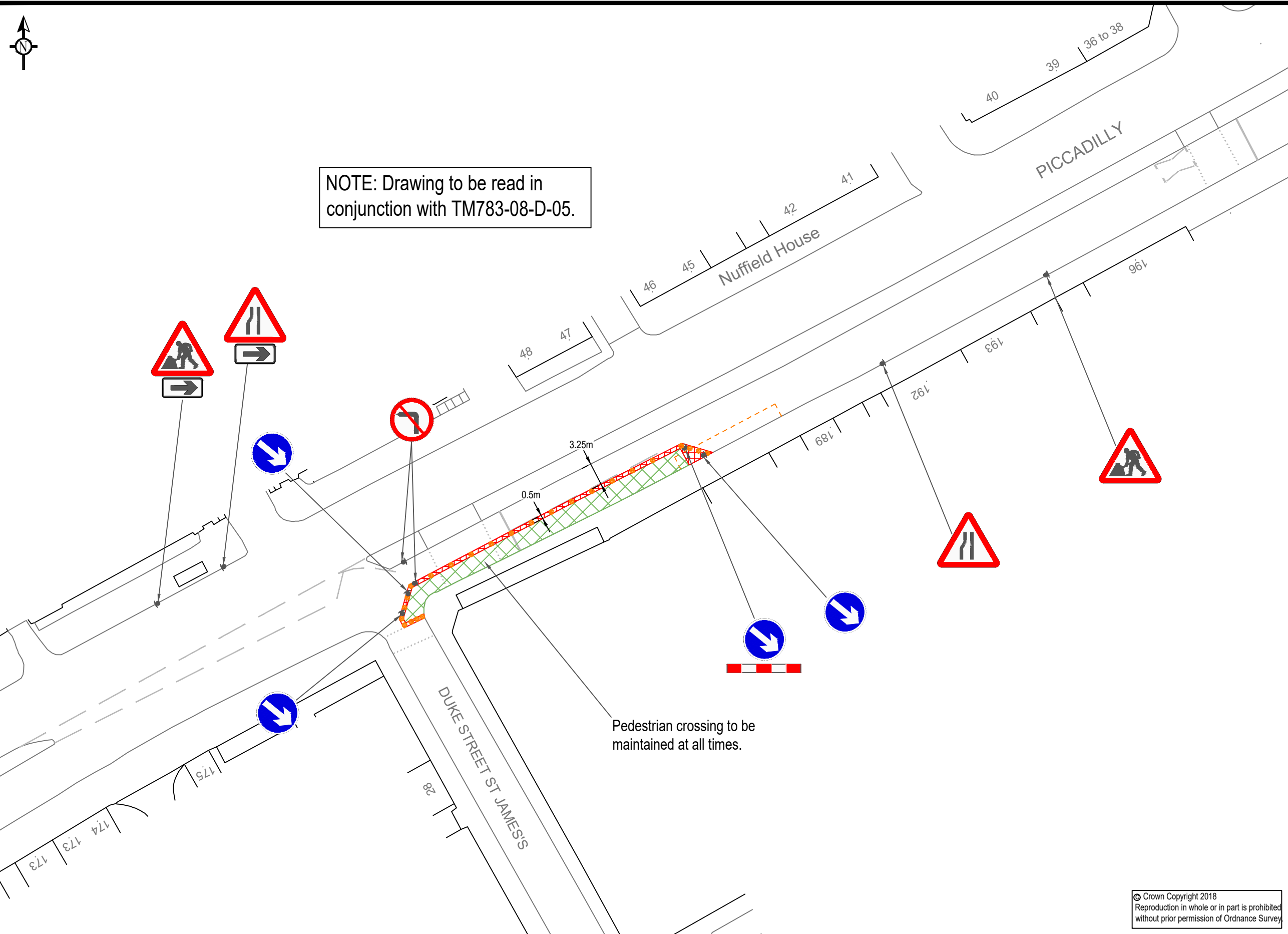
NOTE: Drawing to be read in conjunction with TM783-08-D-05.

NOTES:

- 1) All dimensions are in millimetres, unless stated otherwise.
- 2) Do not scale from this drawing.
- 3) All signing to be erected to "The Traffic Signs Manual Chapter 8" guidelines.

KEY:

- Works Area
- Safety Zones
- Sign Location and Rotation
- 750mm Traffic Cone
- Pedestrian Barrier with Tapping Rail
- Pedestrian Ramp



© Crown Copyright 2018
Reproduction in whole or in part is prohibited
without prior permission of Ordnance Survey.



The Old Council Yard
Hedingham Road
Great Yeldham
Essex
CO9 4HS

t: 01787 237509
www.capitaltraffic.co.uk
enquiries@capitaltraffic.co.uk



PROJECT: TEMPORARY TRAFFIC MANAGEMENT	
DESIGNED BY: GE	DRAWN BY: GE
CHECKED BY: JMT	SCALE: 1:500 @ A3

TITLE: PICCADILLY, MAYFAIR, W1J 9EJ TEMPORARY LANE CLOSURE PHASE 2	
DATE: 26/10/2018	DRAWING No: TM783-08-D-01
REV: D	